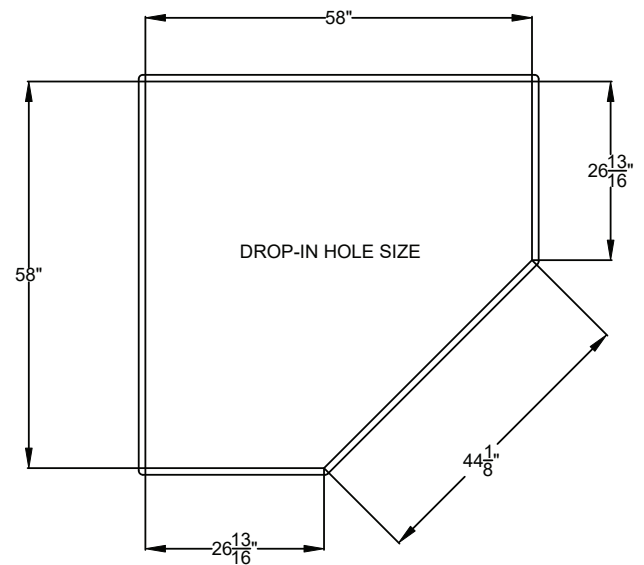
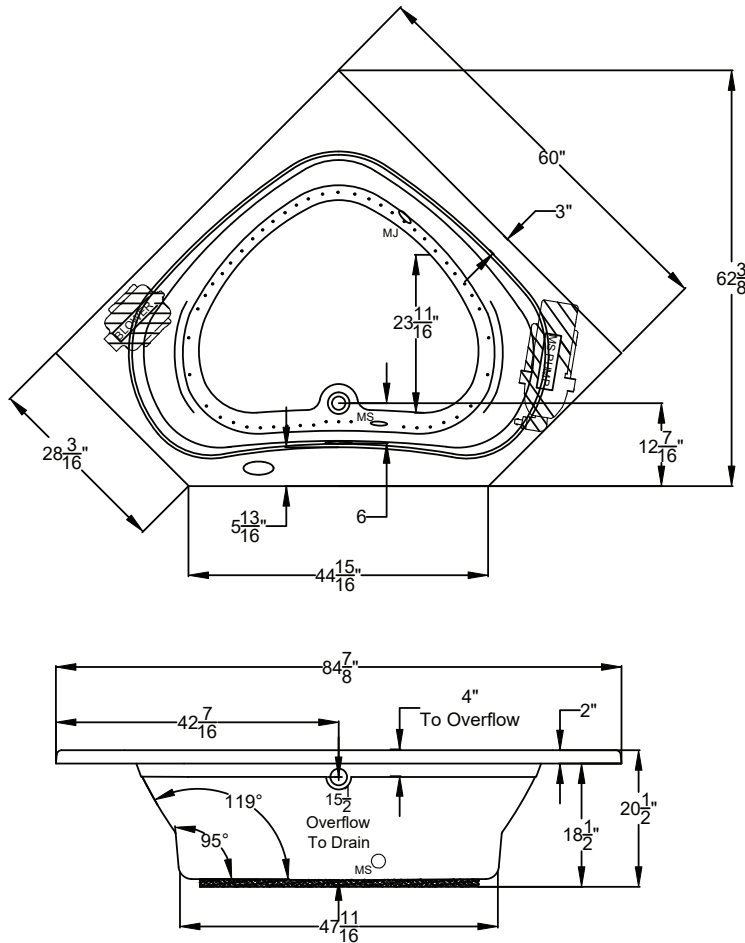




# Designer Collection Specifications

## CC550

### MicroSilk® - AirMasseur®




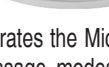
Patents received or pending.

Note: Dimensional Tolerances:  $\pm 1/4"$

**Drop-in Hole Size:** See Diagram  
**Operating Capacity:** 54 Gal.  
**Overflow Capacity:** 87 Gal.  
**Floor Loading / sq.ft.:** 43.9 lbs.  
**Carton Wt.:** 157 lbs.  
**Cube:** 50.9 ft.<sup>3</sup>

**Construction:** Fiberglass reinforced acrylic bath with Level Form™ full-support base.

*We provide products listed with Intertek ETL SEMKO (Edison Testing Laboratories) U.S. and Canadian and with International Association of Plumbing and Mechanical Officials (IAPMO). Consult factory with your listing requirements.*

Standard	 <p>A 120V system that includes a MicroSilk® unit; a 1HP, variable speed air blower with integral air heater; automatic purge cycle; an electronic control that operated the MicroSilk® unit, blower, and blower speed for continuous, pulse or wave massage modes; and a 20-minute timer.</p>
Premier	 <p>A 120V system that includes a MicroSilk® unit; a 1HP, variable speed air blower with integral air heater; automatic purge cycle; (2) Chromatherapy mood lights; Automatic Ozone System; a digital control with LCD display that operates the MicroSilk® Unit, blower and blower speed for continuous, pulse or wave massage modes; enhanced user control options; and a 20-minute timer. Control keypad operates the MicroSilk® unit, blower and blower speed for continuous, pulse or wave massage modes, LED Chromatherapy lights and shows MicroSilk® status, blower speed, and time remaining.</p>