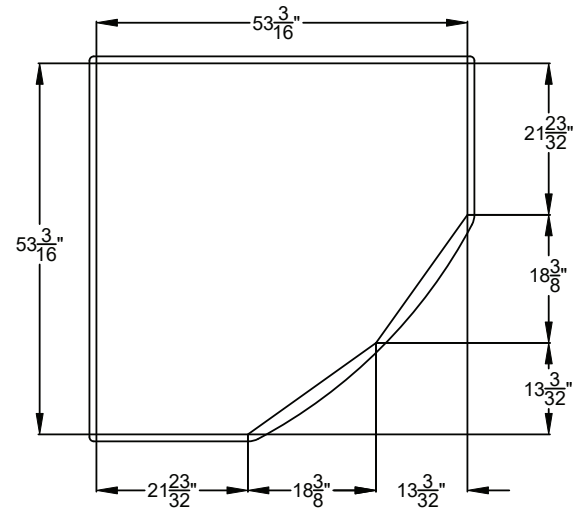
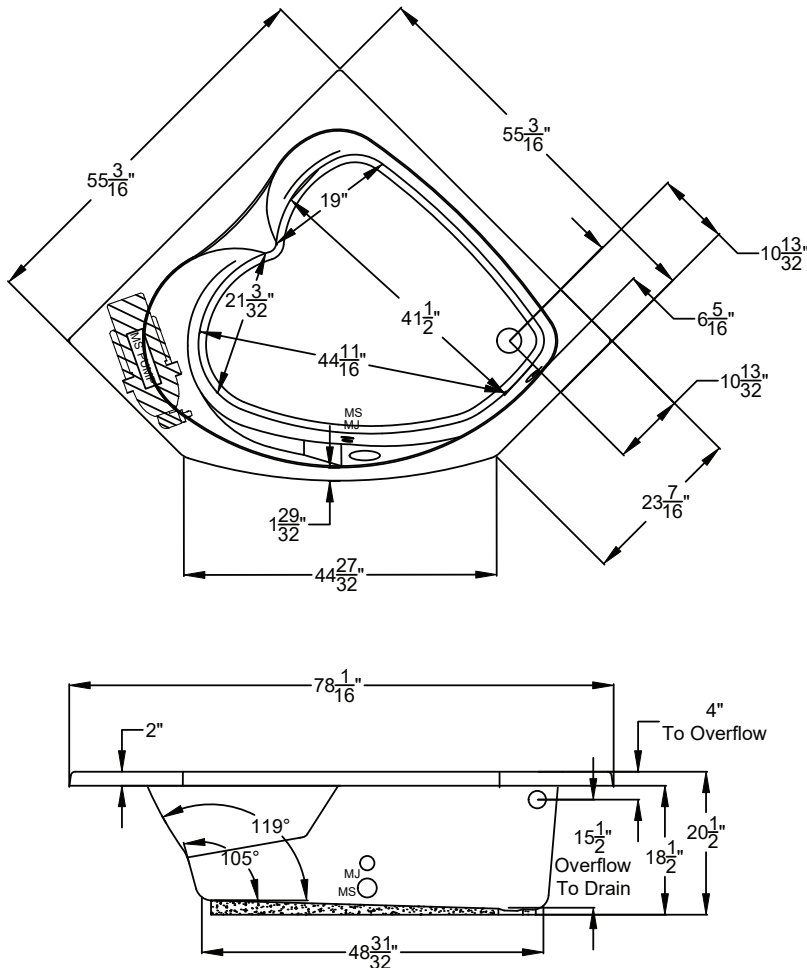




# Designer Collection Specifications

## DE4646

### MicroSilk®



Patents received or pending.

Note: Dimensional Tolerances:  $\pm 1/4"$

**Drop-in Hole Size:** See Diagram

**Operating Capacity:** 59 Gal.

**Overflow Capacity:** 71 Gal.

**Floor Loading / sq.ft.:** 52.9 lbs.

**Carton Wt.:** 125 lbs.

**Cube:** 43.1 ft.<sup>3</sup>

**Construction:** Fiberglass reinforced acrylic bath with Level Form™ full-support base.

*We provide products listed with Intertek ETL SEMKO (Edison Testing Laboratories) U.S. and Canadian and with International Association of Plumbing and Mechanical Officials (IAPMO). Consult factory with your listing requirements.*

## Standard



A 120V system that includes a MicroSilk® unit, an electronic control, and a 20-minute timer.

Premier



A 120V system that includes a MicroSilk® unit; (2) Chromatherapy mood lights; Automatic Ozone System; a digital control with LCD display, enhanced user control options, and a 20-minute timer. Control keypad controls the MicroSilk® unit, LED Chromatherapy mood lights, and shows equipment status, and time remaining.