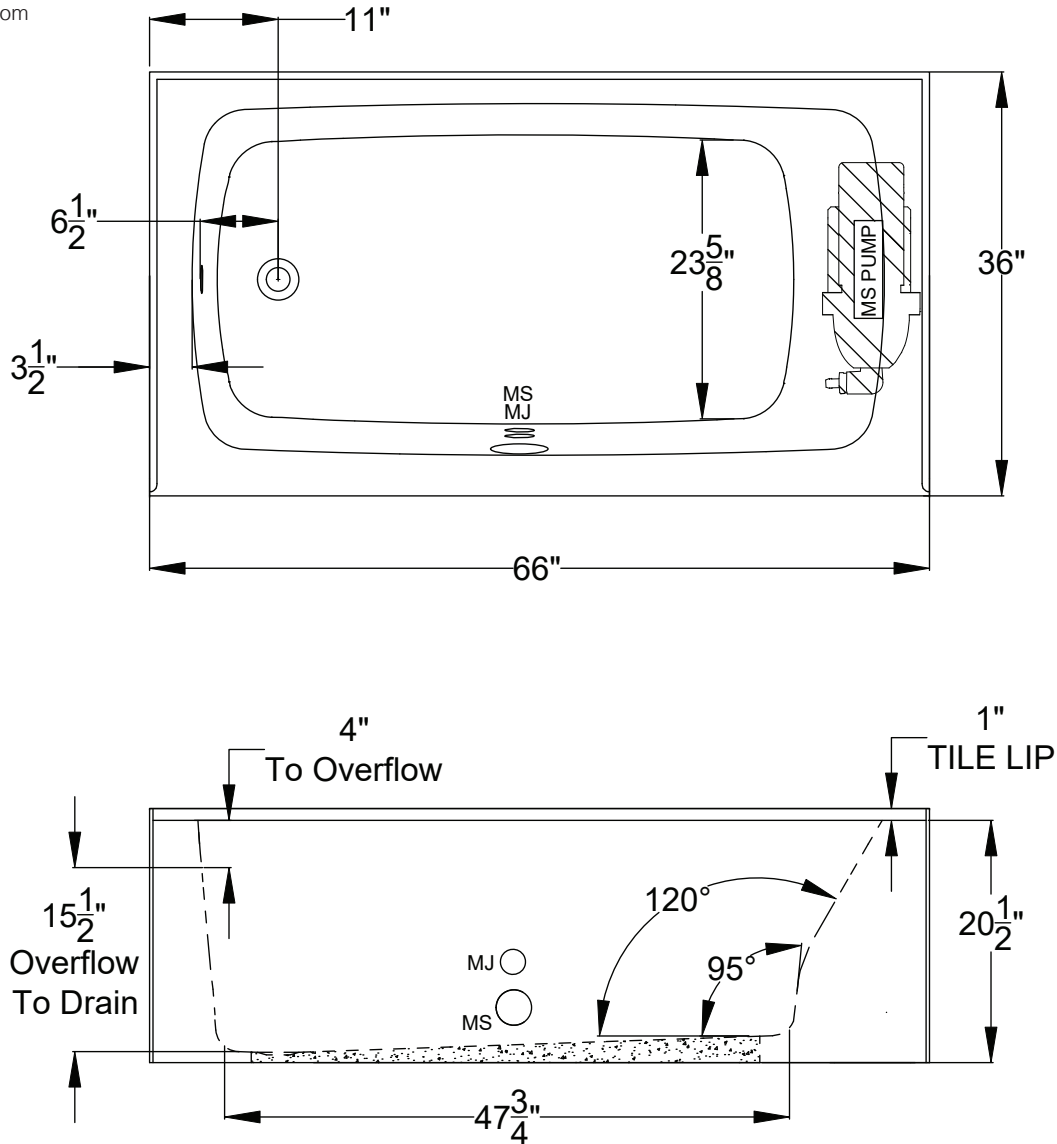




Designer Collection Specifications

KT553-SL/SR

MicroSilk[®]





Patents received or pending.

Note: Dimensional Tolerances: $\pm 1/4"$

Drop-in Hole Size: N/A
Operating Capacity: 48 Gal.
Overflow Capacity: 75 Gal.
Floor Loading / sq.ft.: 51 lbs.
Carton Wt.: 124 lbs.
Cube: 34.3 ft.³

Construction: Fiberglass reinforced acrylic bath with Level Form[™] full-support base.

We provide products listed with Intertek ETL SEMKO (Edison Testing Laboratories) U.S. and Canadian and with International Association of Plumbing and Mechanical Officials (IAPMO). Consult factory with your listing requirements.

| | |
|----------|--|
| Standard |  <p>A 120V system that includes a MicroSilk[®] unit, an electronic control, and a 20-minute timer.</p> |
| Premier |  <p>A 120V system that includes a MicroSilk[®] unit; (2) Chromatherapy mood lights; Automatic Ozone System; a digital control with LCD display, enhanced user control options, and a 20-minute timer. Control keypad controls the MicroSilk[®] unit, LED Chromatherapy mood lights, and shows equipment status, and time remaining.</p> |