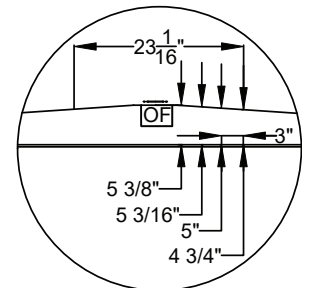
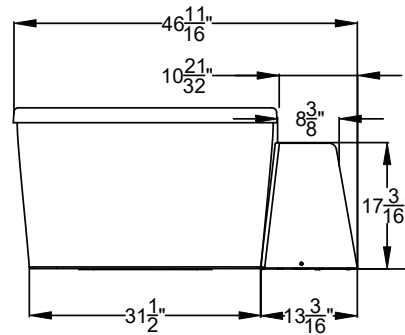
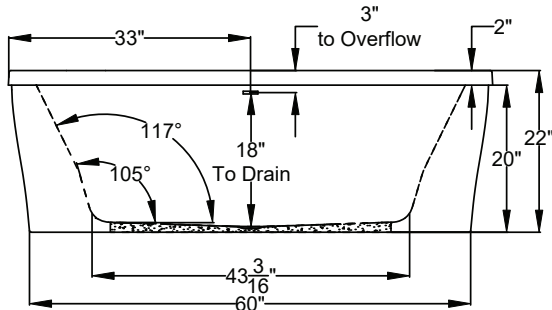
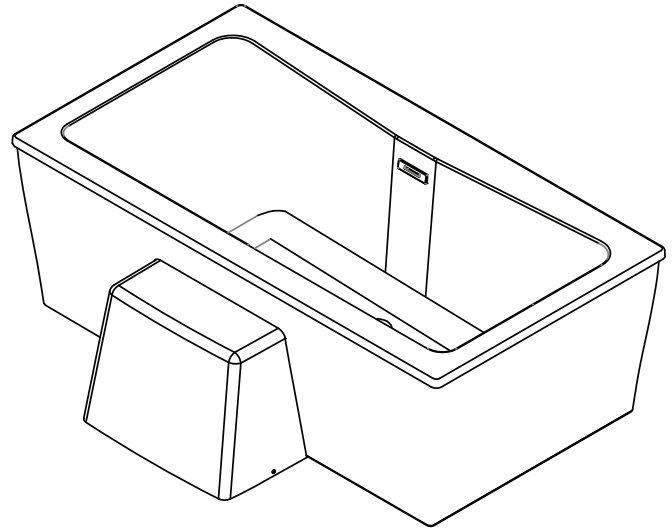
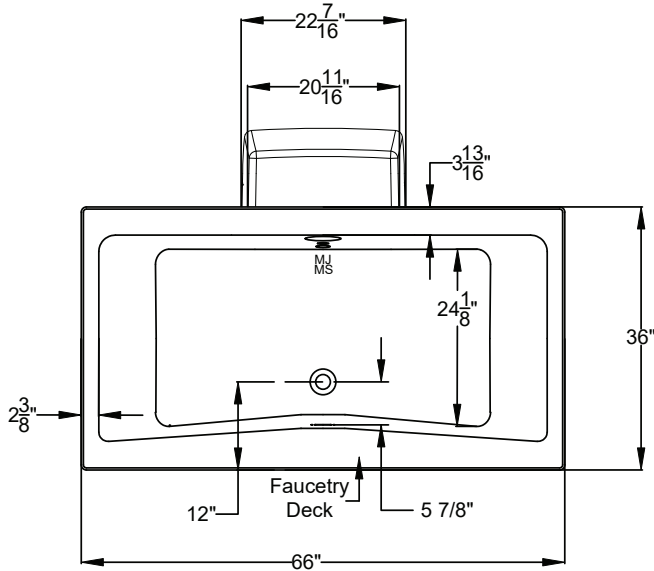




Designer Collection Specifications

RD553PS

MicroSilk[®]



Faucetry Deck
Flat Dimensions

Note: Acrylic Equipment Cabinet is required on MicroSilk[®] baths.

Patents received or pending.



Includes Linear Overflow Drain Assembly

Note: Dimensional Tolerances: $\pm 1/4$ "

Drop-in Hole Size: N/A
Operating Capacity: 45 Gal.
Overflow Capacity: 88 Gal.
Floor Loading / sq.ft.: 54.7 lbs.
Carton Wt.: 197 lbs.
Cube: 36.6 ft.³

Construction: Fiberglass reinforced acrylic bath
with Level Form[™] full-support base.

We provide products listed with Intertek ETL SEMKO (Edison Testing Laboratories) U.S. and Canadian and with International Association of Plumbing and Mechanical Officials (IAPMO). Consult factory with your listing requirements.

Standard	 <p>A 120V system that includes a MicroSilk[®] unit, an electronic control, and a 20-minute timer.</p>
Premier	 <p>A 120V system that includes a MicroSilk[®] unit; (2) Chromotherapy mood lights; Automatic Ozone System; a digital control with LCD display, enhanced user control options, and a 20-minute timer. Control keypad controls the MicroSilk[®] unit, LED Chromotherapy mood lights, and shows equipment status, and time remaining.</p>