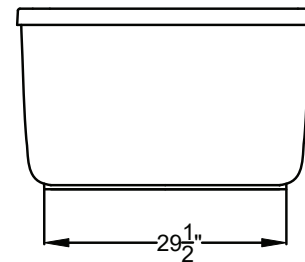
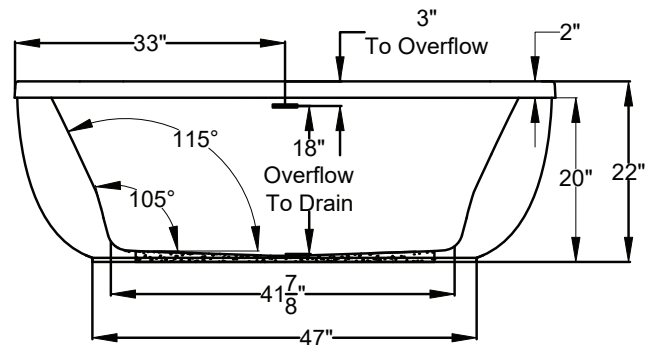
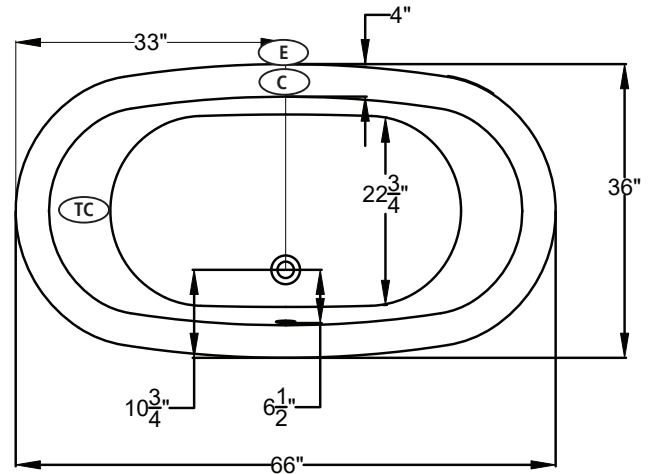


UNDERMOUNTABLE: No

FAUCETRY DECK: No

TEXTURED FLOOR: No

<div> <div>(S)</div> SOAKING Includes Level-Form™ Base </div> <div> \$5,555 (1186.06.00.CC) </div> <div> <small>All hydrotherapy equipment is rated for 120V, 20A (US) Consult Spec Sheet on website for Boxed Weight & Cube. .CC = Color Code / See page 155 for color options.</small> Operating Cap: 39 U.S. Gal. </div>		STANDARD Includes: • Linear Overflow Drain • Touch Control Pad • 20-minute timer	PREMIER All Standard features plus: • Ozone • Digital Control Pad • LED Chromatherapy
<div>(a)</div> AIRMASSEUR®	Includes 40 strategically located air jets, 1hp blower w/ heater.	\$8,795 (1186.06.21.CC)	\$10,015 (1186.06.25.CC)
<div>(m)</div> MICROSILK®	Includes 1 MicroSilk delivery port, MicroSilk unit.	\$9,255 (1186.06.61.CC)	\$10,475 (1186.06.65.CC)



Bath Options

For handle information, see page 127.
For details & additional options, see page 128-130.

GH400 HANDLE - Factory installed. Accepts 1 handle across from overflow.	8709-04-0CC	\$315
ACRYLIC EQUIPMENT CABINET - Page 129 (a)	8701-10-0CC	\$1,025
BLUETOOTH SOUND IMMERSION SYSTEM - Page 128	8724-01-000	\$835
WATER LEVEL SENSOR - Page 128	8724-02-000	\$1,030
THERMO COMFORT - Page 129 (S) (a) (m)	8706-04-XXX	\$840
MICROSILK SHOWER WAND - Page 129	Polished Chrome 8705-55-091	\$505
LINEAR OVERFLOW DRAIN KITS - For finish options, see Page 129.	Polished Chrome MLD-PC	Included
	Optional Finishes MLD-XX	ADD \$120

- (C) Control Location
- (E) Equipment Cabinet
- (TC) Thermo Comfort Heating Pad Location

The Acrylic Equipment Cabinet is required on MicroSilk® baths and is available as an option on Airmasseur® baths.

