

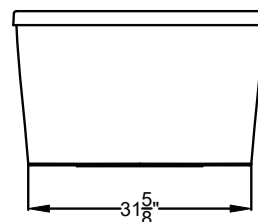
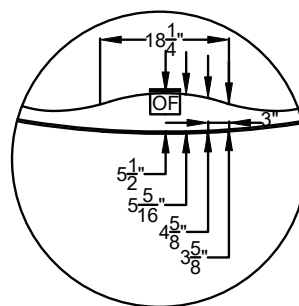
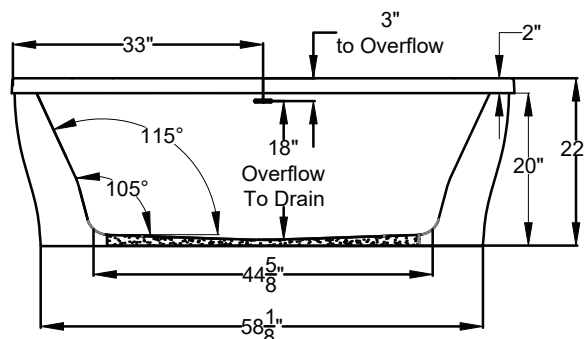
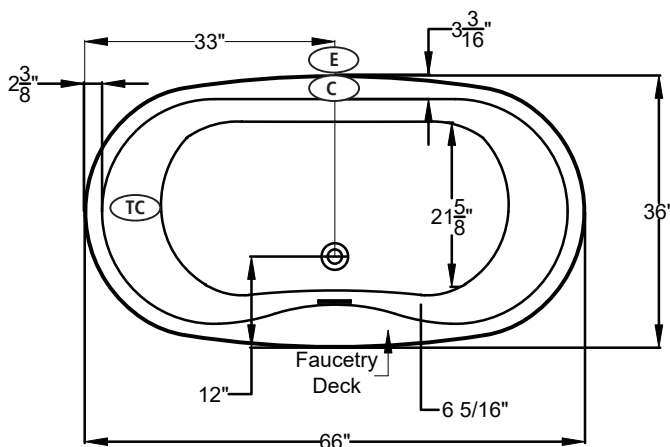
UNDERMOUNTABLE: No

FAUCETRY DECK: Yes

TEXTURED FLOOR: No

| <div><div><div>S</div></div><div>SOAKING</div><div>Includes Level-Form™ Base</div></div> <div><div>\$5,555</div><div>(1192.04.00.CC)</div></div> <div><div>All hydrotherapy equipment is rated for 120V, 20A (US) Consult Spec Sheet on website for Boxed Weight & Cube. .CC = Color Code / See page 155 for color options.</div><div>Operating Cap: 41 U.S. Gal.</div></div> | | STANDARD | PREMIER |
|---|--|--|--|
| | | <div>Includes:</div> <div><div>• Linear Overflow Drain</div><div>• Touch Control Pad</div><div>• 20-minute timer</div></div> | <div>All Standard features plus:</div> <div><div>• Ozone</div><div>• Digital Control Pad</div><div>• LED Chromatherapy</div></div> |
| <div><div>a</div><div>AIRMASSEUR®</div></div> | <div>Includes 52 strategically located air jets, 1hp blower w/ heater.</div> | <div>\$8,795</div> <div>(1192.04.21.CC)</div> | <div>\$10,015</div> <div>(1192.04.25.CC)</div> |
| <div><div>m</div><div>MICROSILK®</div></div> | <div>Includes 1 MicroSilk delivery port, MicroSilk unit.</div> | <div>\$9,255</div> <div>(1192.04.61.CC)</div> | <div>\$10,475</div> <div>(1192.04.65.CC)</div> |

Designer
FREESTANDING



Faucetry Deck
Flat Dimensions

- (C)** Control Location
- (E)** Equipment Cabinet
- (TC)** Thermo Comfort Heating Pad Location



The Acrylic Equipment Cabinet is required on MicroSilk[®] baths and is available as an option on Airmasseur[®] baths.

Bath Options

For handle information, see page 127.
For details & additional options, see page 128-130.

| | | |
|--|-----------------------------|-----------|
| GH400 HANDLE - Factory installed. Accepts 1 handle across from overflow. | 8709-04-0CC | \$315 |
| ACRYLIC EQUIPMENT CABINET - Page 129 (a) | 8701-10-0CC | \$1,025 |
| BLUETOOTH SOUND IMMERSION SYSTEM - Page 128 | 8724-01-000 | \$835 |
| WATER LEVEL SENSOR - Page 128 | 8724-02-000 | \$1,030 |
| THERMO COMFORT - Page 129 (S) (a) (m) | 8706-04-XXX | \$840 |
| MICROSILK SHOWER WAND - Page 129 | Polished Chrome 8705-55-091 | \$505 |
| LINEAR OVERFLOW DRAIN KITS - For finish options, see Page 129. | Polished Chrome MLD-PC | Included |
| | Optional Finishes MLD-XX | ADD \$120 |