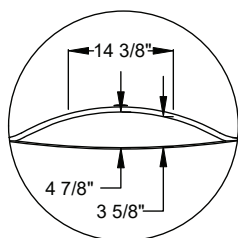
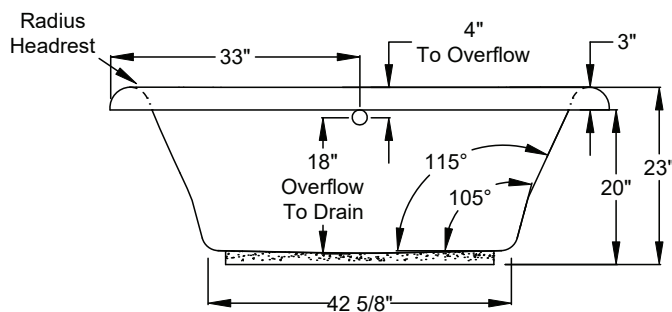
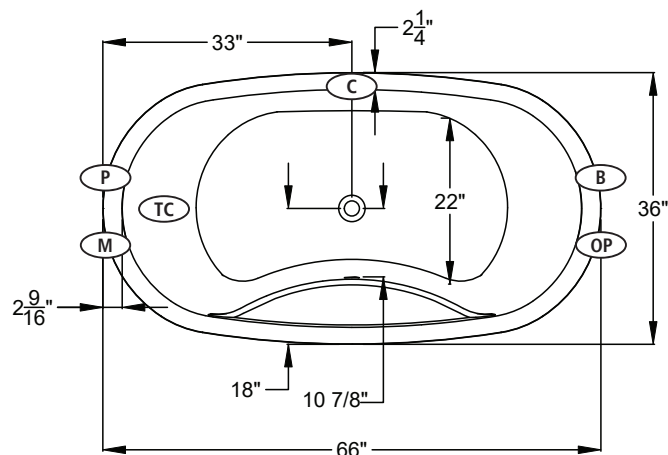


<div><div><div><div>S</div></div></div><div>SOAKING</div><div>Includes Level-Form™ Base</div></div> <div><div>\$3,100</div><div>(2206.00.00.CC)</div></div> <div><div>All hydrotherapy equipment is rated for 120V, 20A (US) Consult Spec Sheet on website for Boxed Weight &amp; Cube. .CC = Color Code / See page 155 for color options.</div><div>Operating Cap: 41 U.S. Gal.</div></div>		STANDARD	PREMIER
		<div>Includes:</div> <div><div>• 120V Systems</div><div>• Touch Control Pad</div><div>• 20-minute timer</div></div>	<div>All Standard features plus:</div> <div><div>• Ozone</div><div>• Digital Control Pad</div><div>• LED Chromatherapy</div></div>
<div><div>W</div><div>WHIRLPOOL</div></div>	Includes 6 adjustable jets with pump unit indicated.	<div>\$6,240</div> <div>(2206.00.11.CC)</div>	<div>\$7,460</div> <div>with Whirlpool heater</div> <div>(2206.00.15.CC)</div>
<div><div>a</div><div>AIRMASSEUR®</div></div>	Includes 35 strategically located air jets, 1hp blower w/ heater.	<div>\$6,340</div> <div>(2206.00.21.CC)</div>	<div>\$7,560</div> <div>(2206.00.25.CC)</div>
<div><div>m</div><div>MICROSILK®</div></div>	Includes 1 MicroSilk delivery port, MicroSilk unit.	<div>\$6,100</div> <div>(2206.00.61.CC)</div>	<div>\$7,320</div> <div>(2206.00.65.CC)</div>
<div><div>aw</div><div>AIRMASSEUR® WHIRLPOOL</div></div>	Includes 6 adjustable jets and 35 air jets; 1.5 hp pump; 1hp blower w/ heater. Combines all features provided with both <div>W</div> & <div>a</div> equipped Standard or Premier baths, respectively.	<div>\$8,180</div> <div>(2206.00.31.CC)</div>	<div>\$9,400</div> <div>with Whirlpool heater</div> <div>(2206.00.35.CC)</div>
<div><div>mw</div><div>MICROSILK® WHIRLPOOL</div></div>	Includes 6 adjustable jets and 1 MicroSilk delivery port; MicroSilk unit; 1.5 hp pump. Combines all features provided with both <div>W</div> & <div>m</div> equipped Standard or Premier baths, respectively.	<div>\$9,235</div> <div>(2206.00.71.CC)</div>	<div>\$10,455</div> <div>with Whirlpool heater</div> <div>(2206.00.75.CC)</div>
<div><div>ma</div><div>MICROSILK® AIRMASSEUR®</div></div>	Includes 1 MicroSilk delivery port, 35 strategically located air jets; MicroSilk unit; 1hp blower w/ heater. Combines all features provided with both <div>a</div> & <div>m</div> equipped Standard or Premier baths, respectively.	<div>\$9,340</div> <div>(2206.00.81.CC)</div>	<div>\$10,560</div> <div>(2206.00.85.CC)</div>



Faucetry Deck  
Flat Dimensions



## Bath Options

For handle information, see page 127.  
For details & additional options, see page 128-130.

<b>GH20 HANDLE</b> - Factory installed. Accepts 1 handle across from overflow.		8709-24-0CC	\$240
<b>JETTED NECK PILLOW</b> - Page 128 <b>(W)</b> <b>(MW)</b>		8707-50-0CC	\$1,145
<b>BACKSTACK™ JETS</b> - Page 128 <b>(W)</b> <b>(MW)</b>		8707-30-001	\$930
<b>BLUETOOTH SOUND IMMERSION SYSTEM</b> - Page 128		8724-01-000	\$835
<b>WATER LEVEL SENSOR</b> - Page 128		8724-02-000	\$1,030
<b>THERMO COMFORT</b> - Page 129		8706-04-XXX	\$840
<b>MICROSILK SHOWER WAND</b> - Page 129	Polished Chrome	8705-55-091	\$505
	Optional Finishes	8705-15-091	\$160
<b>DESIGNER OVERFLOW DRAIN KITS</b> - For finish options, see Page 129.		8705-15-0XX	\$275

**(C)** Control Location

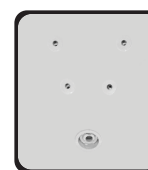
**(M)** MicroSilk® Unit Location

**(P)** Whirlpool Pump Location

**(B)** Blower Location

**(TC)** Thermo Comfort Heating Pad Location

**(OP)** Optional pump location available on **(W)** only. Please designate pump location.



1 set of  
Back-Stack™ jets  
on **(W)** **(MW)**  
(Optional)