

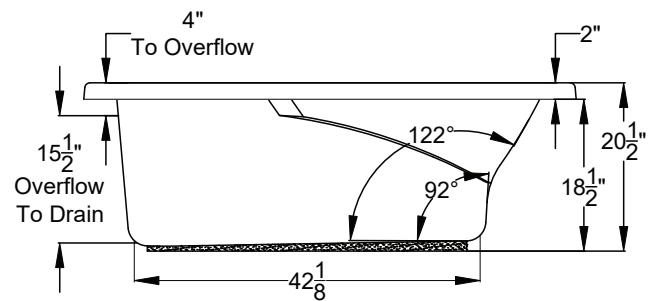
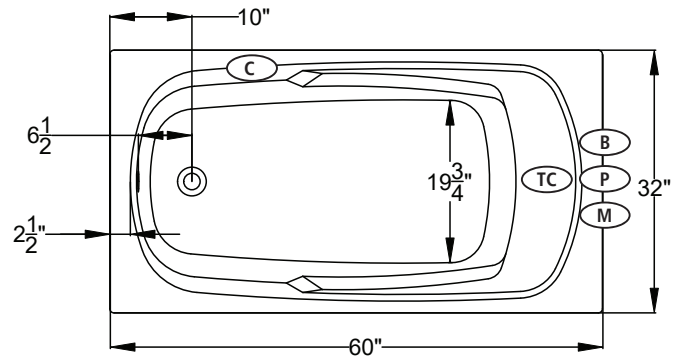
UNDERMOUNTABLE: Yes

FAUCETRY DECK: No

TEXTURED FLOOR: Yes

| <div> <div>(S)</div> <div>SOAKING</div> <div>Includes Level-Form™ Base</div> </div> <div> <div>\$2,910</div> <div>(2151.00.00.CC)</div> </div> <div> <div>All hydrotherapy equipment is rated for 120V, 20A (US) Consult Spec Sheet on website for Boxed Weight & Cube. .CC = Color Code / See page 155 for color options.</div> <div>Operating Cap: 36 U.S. Gal.</div> </div> | | STANDARD | PREMIER |
|--|--|--|---|
| <div>(W)</div> <div>WHIRLPOOL</div> <div>Includes 5 adjustable jets and 2 foot jets with pump unit indicated.</div> | | <div>\$6,050</div> <div>(2151.00.11.CC)</div> | <div>\$7,270</div> <div>with Whirlpool heater</div> <div>(2151.00.15.CC)</div> |
| <div>(a)</div> <div>AIRMASSEUR[®]</div> <div>Includes 38 strategically located air jets, 1hp blower w/ heater.</div> | | <div>\$6,150</div> <div>(2151.00.21.CC)</div> | <div>\$7,370</div> <div>(2151.00.25.CC)</div> |
| <div>(m)</div> <div>MICROSILK[®]</div> <div>Includes 1 MicroSilk delivery port, MicroSilk unit.</div> | | <div>\$5,910</div> <div>(2151.00.61.CC)</div> | <div>\$7,130</div> <div>(2151.00.65.CC)</div> |
| <div>(aw)</div> <div>AIRMASSEUR[®] WHIRLPOOL</div> <div>Includes 5 adjustable jets, 2 foot jets and 38 air jets; 1.5 hp pump; 1hp blower w/ heater. Combines all features provided with both (W) & (a) equipped Standard or Premier baths, respectively.</div> | | <div>\$7,990</div> <div>(2151.00.31.CC)</div> | <div>\$9,210</div> <div>with Whirlpool heater</div> <div>(2151.00.35.CC)</div> |
| <div>(mw)</div> <div>MICROSILK[®] WHIRLPOOL</div> | | N/A | N/A |
| <div>(ma)</div> <div>MICROSILK[®] AIRMASSEUR[®]</div> <div>Includes 1 MicroSilk delivery port, 38 strategically located air jets; MicroSilk unit; 1hp blower w/ heater. Combines all features provided with both (a) & (m) equipped Standard or Premier baths, respectively.</div> | | <div>\$9,150</div> <div>(2151.00.81.CC)</div> | <div>\$10,370</div> <div>(2151.00.85.CC)</div> |

Control pad can be mounted on opposing side of vessel by request.



*Blower must be remote mounted on MicroSilk®-AirMasseur® and Air-Whirlpool baths. See page 130 for remote blower mounting.

- (C) Control Location (B) Blower Location
(M) MicroSilk® Unit Location (TC) Thermo Comfort Heating Pad Location
(P) Whirlpool Pump Location

| Bath Options | | | |
|---|--|--------------------------------|---------|
| For handle information, see page 127. For details & additional options, see page 128-130. | | | |
| GH400 HANDLE - Factory installed. Accepts 2 handles. Price is per handle. If ordering 1 handle, indicate handle installation. | | 8709-04-0CC | \$315 |
| JETTED NECK PILLOW - Page 128 (W) (aw) | | 8707-50-0CC | \$1,145 |
| BACKSTACK™ JETS | | | N/A |
| BLUETOOTH SOUND IMMERSION SYSTEM - Page 128 | | 8724-01-000 | \$835 |
| WATER LEVEL SENSOR - Page 128 | | 8724-02-000 | \$1,030 |
| THERMO COMFORT - Page 129 (S) (W) | | 8706-04-XXX | \$840 |
| MICROSILK SHOWER WAND - Page 129 | | Polished Chrome 8705-55-091 | \$505 |
| DESIGNER OVERFLOW DRAIN KITS - For finish options, see Page 129. | | Polished Chrome DDK-PC | \$160 |
| | | Optional Finishes DDK-XX | \$275 |
| TILE FLANGE KIT - Page 129 | | 8707-11-001 | \$190 |
| LATERAL SKIRT - Page 131 | | 8700-01-0CC | \$1,165 |