

UNDERMOUNTABLE: No

FAUCETRY DECK: Yes

TEXTURED FLOOR: No

(S)

SOAKING

Includes Level-Form[™] Base

\$5,365
(1199.04.00.CC)

All hydrotherapy equipment is rated for 120V, 20A (US)
Consult Spec Sheet on website for Boxed Weight & Cube.
.CC = Color Code / See page 155 for color options.

Operating Cap: 34 U.S. Gal.

STANDARD

Includes:

- Linear Overflow Drain
- Touch Control Pad
- 20-minute timer

PREMIER

All Standard features plus:

- Ozone
- Digital Control Pad
- LED Chromatherapy

(a)

AIRMASSEUR[®]

Includes 42 strategically located air jets, 1hp blower w/ heater.

\$8,605

(1199.04.21.CC)

\$9,825

(1199.04.25.CC)

(m)

MICROSILK[®]

Includes 1 MicroSilk delivery port, MicroSilk unit.

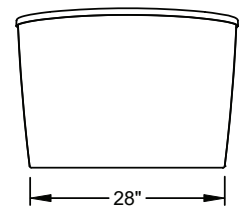
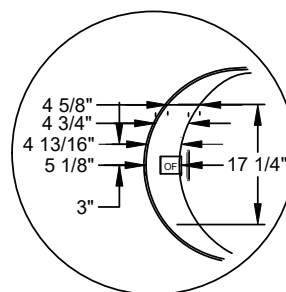
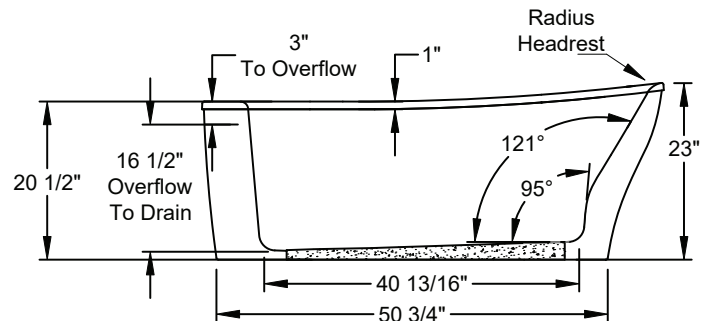
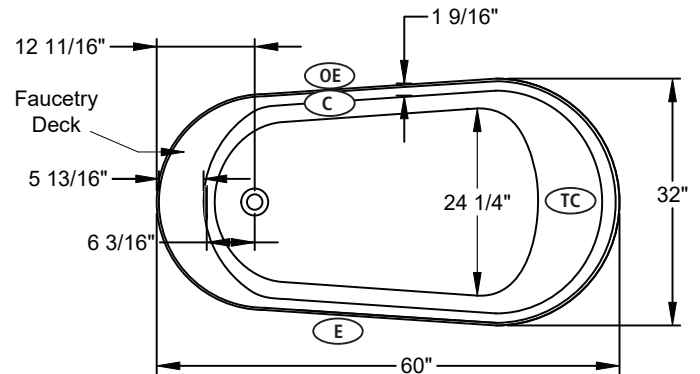
\$9,065

(1199.04.61.CC)

\$10,285

(1199.04.65.CC)

Designer
FREESTANDING



Faucetry Deck
Flat Dimensions

- (C) Control Location
- (E) Equipment Cabinet
- (TC) Thermo Comfort Heating Pad Location
- (OE) Equipment Cabinet (Optional Location)



The Acrylic Equipment Cabinet is required on MicroSilk[®] baths and unavailable for the AirMasseur[®] version of this model.

Bath Options

For handle information, see page 127.
For details & additional options, see page 128-130.

ACRYLIC HANDLE			N/A
ACRYLIC EQUIPMENT CABINET - Page 129	8701-20-0CC	N/A	
BLUETOOTH SOUND IMMERSION SYSTEM - Page 128	8724-01-000	\$835	
WATER LEVEL SENSOR - Page 128	8724-02-000	\$1,030	
THERMO COMFORT - Page 129 (S) (m)	8706-04-XXX	\$840	
MICROSILK SHOWER WAND - Page 129	Polished Chrome	8705-55-091	\$505
LINEAR OVERFLOW DRAIN KITS - For finish options, see Page 129.	Polished Chrome	MLD-PC	Included
	Optional Finishes	MLD-XX	ADD \$120