

UNDERMOUNTABLE: Yes

FAUCETRY DECK: Yes

TEXTURED FLOOR: Yes

(S)

SOAKING

Includes Level-Form™ Base

\$2,795
(3141.00.00.CC)

All hydrotherapy equipment is rated for 120V, 20A (US)
Consult Spec Sheet on website for Boxed Weight & Cube.
.CC = Color Code / See page 155 for color options.

Operating Cap: 49 U.S. Gal.

(M): Equipment may extend beyond the perimeter
of the bath. Consult factory for details.

(W)

WHIRLPOOL

- 1 hp, 120V pump - Air on/off control
- Includes 6 adjustable jets

\$4,090

(3141.00.17.CC)

(a)

AIRMASSEUR[®]

- ¾ hp, 120V blower - Air on/off control with 20-minute timer & purge
- 48 strategically located air jets
- 20-minute timer with purge cycle

\$4,620

(3141.00.27.CC)

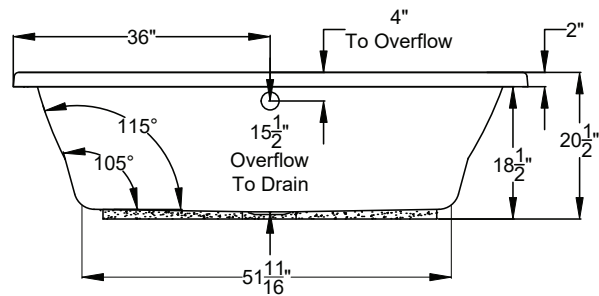
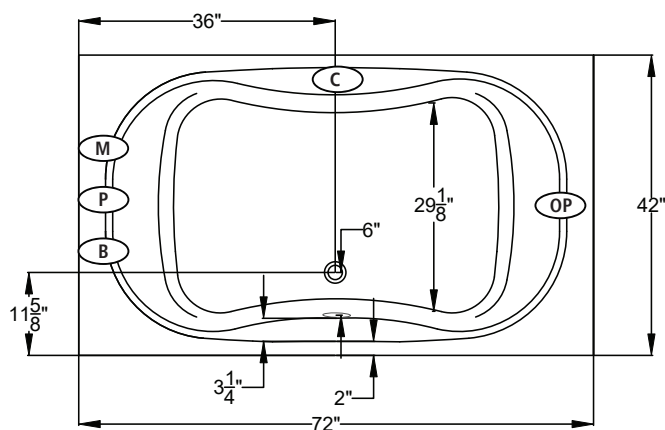
(m)

MICROSILK[®]

- 120V MicroSilk[®] System - Air on/off control with a 20-minute timer
- Includes 1 MicroSilk[®] delivery port

\$4,695

(3141.00.67.CC)



(M) MicroSilk[®] Unit Location
(B) Blower Location
(OP) Optional Pump Location

(P) Pump Location
(C) Control Location

Bath Options

For handle information, see page 127.
For additional options and details, see page 128-130.

LATERAL SKIRT - Page 131 Field Installed	WT	8700-03-001	\$1,165
	BQ	8700-03-040	\$1,165
GH20 GRIP HANDLES			N/A
AUTOMATIC OZONE SYSTEM - Page 128	(W) (m)	OZONE-100	\$700
	(a)	OZONE-200	\$700
STAINLESS STEEL HEATER - Page 128	(W)	8706-11-106	\$455
OVERFLOW DRAIN ASSEMBLY - Page 129 (Group BE)	WT	8705-15-001	\$275
	BQ	8705-15-040	\$275
	Polished Chrome	8705-15-091	\$160
	Polished Nickel	8705-15-092	\$275
	Brushed Nickel	8705-15-095	\$275
	Oil Rubbed Bronze	8705-15-098	\$275
MICROSILK SHOWER WAND - Page 129	Polished Chrome	8705-55-091	\$505
TILE FLANGE KIT - Page 129		8707-11-001	\$190