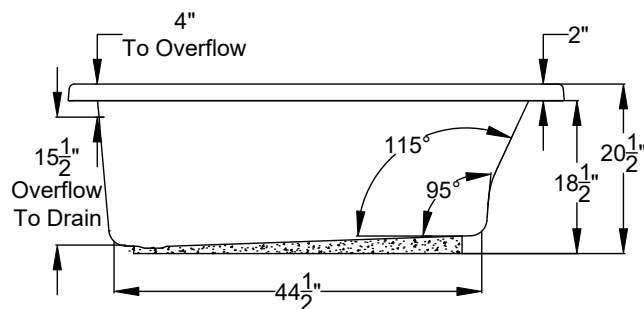
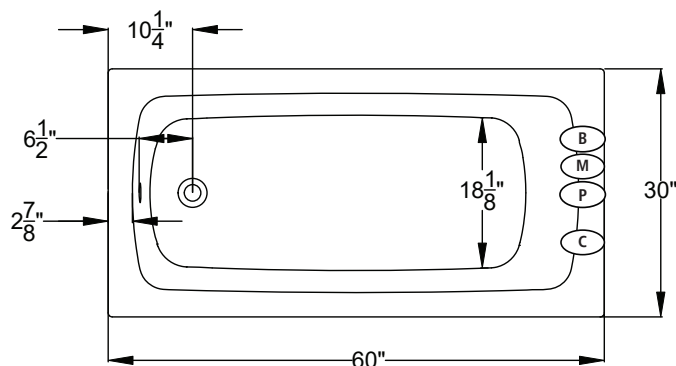


UNDERMOUNTABLE: No

FAUCETRY DECK: No

TEXTURED FLOOR: No

<div> <div><b>(S)</b></div> <div><b>SOAKING</b></div> <div>Includes Level-Form™ Base</div> </div> <div> <div><b>\$2,800</b></div> <div>(SL) = (3188.40.00.CC)</div> <div>(SR) = (3188.50.00.CC)</div> </div> <div> <div>All hydrotherapy equipment is rated for 120V, 20A (US) Consult Spec Sheet on website for Boxed Weight &amp; Cube. .CC = Color Code / See page 155 for color options.</div> <div>Operating Cap: 38 U.S. Gal.</div> </div>		<div>End-Access Required. Order Removable Access Panel for Front Access.</div> <div> <div>SKIRT LEFT</div> <div>SKIRT RIGHT</div> </div>	
<div> <div><b>(W)</b></div> <div><b>WHIRLPOOL</b></div> </div> <ul style="list-style-type: none"> <li>1 hp, 120V pump - Air on/off control</li> <li>Includes 5 adjustable jets</li> </ul>		<div><b>\$4,095</b></div> <div>(3188.40.17.CC)</div>	<div>(3188.50.17.CC)</div>
<div> <div><b>(a)</b></div> <div><b>AIRMASSEUR<sup>®</sup></b></div> </div> <ul style="list-style-type: none"> <li>¾ hp, 120V blower - Air on/off control with 20-minute timer &amp; purge</li> <li>38 strategically located air jets</li> <li>20-minute timer with purge cycle</li> </ul>		<div><b>\$4,625</b></div> <div>(3188.40.27.CC)</div>	<div>(3188.50.27.CC)</div>
<div> <div><b>(m)</b></div> <div><b>MICROSILK<sup>®</sup></b></div> </div> <ul style="list-style-type: none"> <li>120V MicroSilk<sup>®</sup> System - Air on/off control with a 20-minute timer</li> <li>Includes 1 MicroSilk<sup>®</sup> delivery port</li> </ul>		<div><b>\$4,700</b></div> <div>(3188.40.67.CC)</div>	<div>(3188.50.67.CC)</div>



## Bath Options

For handle information, see page 127.  
For additional options and details, see page 128-130.

REMOVABLE FRONT ACCESS PANEL - Page 131 Factory Installed		8700-07-0CC	\$650
GH400 GRIP HANDLES		Factory Installed. Accepts 2 handles. Price is per handle. If 1 handle is desired, indicate installation location.	
AUTOMATIC OZONE SYSTEM - Page 128	<b>(W)</b> <b>(M)</b>	OZONE-100	\$700
	<b>(a)</b>	OZONE-200	\$700
STAINLESS STEEL HEATER - Page 128	<b>(W)</b>	8706-11-106	\$455
OVERFLOW DRAIN ASSEMBLY - Page 129 (Group BE)	WT	8705-15-001	\$275
	BQ	8705-15-040	\$275
	Polished Chrome	8705-15-091	\$160
	Polished Nickel	8705-15-092	\$275
	Brushed Nickel	8705-15-095	\$275
	Oil Rubbed Bronze	8705-15-098	\$275
MICROSILK SHOWER WAND - Page 129	Polished Chrome	8705-55-091	\$505
TILE FLANGE KIT - Page 129		N/A	

**(M)** MicroSilk<sup>®</sup> Unit Location  
**(B)** Blower Location

**(P)** Pump Location  
**(C)** Control Location