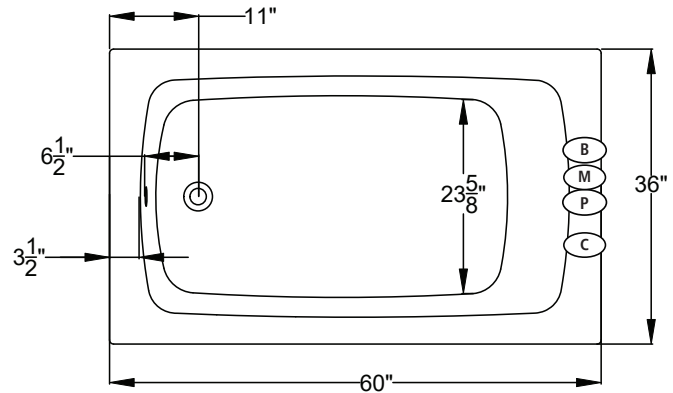
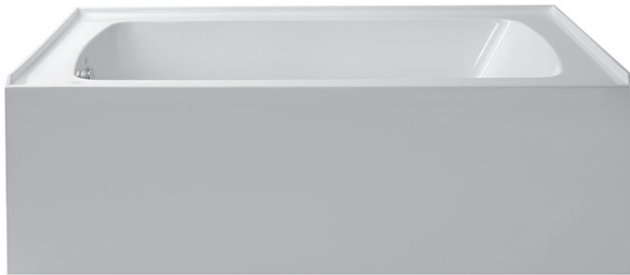


UNDERMOUNTABLE: No

FAUCETRY DECK: No

TEXTURED FLOOR: No

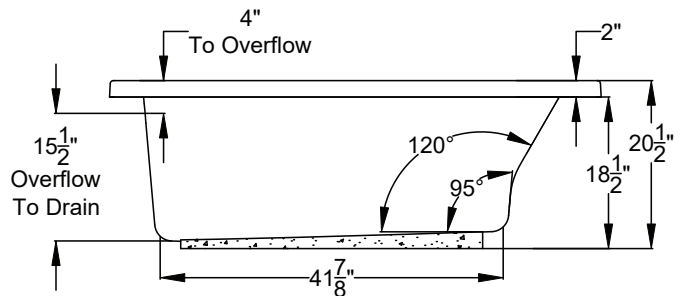
<div> <div>(S)</div> <div>SOAKING</div> <div>Includes Level-Form™ Base</div> </div> <div> <div>\$2,960</div> <div>(SL) = (3197.40.00.CC)</div> <div>(SR) = (3197.50.00.CC)</div> </div> <div> <div>All hydrotherapy equipment is rated for 120V, 20A (US) Consult Spec Sheet on website for Boxed Weight & Cube. .CC = Color Code / See page 155 for color options.</div> <div>Operating Cap: 40 U.S. Gal.</div> </div>		<div>End-Access Required. Order Removable Access Panel for Front Access.</div> <div> <div>SKIRT LEFT</div> <div>SKIRT RIGHT</div> </div>	
<div> <div>(W)</div> <div>WHIRLPOOL</div> </div> <ul style="list-style-type: none"> 1 hp, 120V pump - Air on/off control Includes 5 adjustable jets 		<div>\$4,255</div> <div>(3197.40.17.CC)</div>	<div>\$4,255</div> <div>(3197.50.17.CC)</div>
<div> <div>(a)</div> <div>AIRMASSEUR®</div> </div> <ul style="list-style-type: none"> ¾ hp, 120V blower - Air on/off control with 20-minute timer & purge 38 strategically located air jets 20-minute timer with purge cycle 		<div>\$4,785</div> <div>(3197.40.27.CC)</div>	<div>\$4,785</div> <div>(3197.50.27.CC)</div>
<div> <div>(m)</div> <div>MICROSILK®</div> </div> <ul style="list-style-type: none"> 120V MicroSilk® System - Air on/off control with a 20-minute timer Includes 1 MicroSilk® delivery port 		<div>\$4,860</div> <div>(3197.40.67.CC)</div>	<div>\$4,860</div> <div>(3197.50.67.CC)</div>



Bath Options

For handle information, see page 127.
For additional options and details, see page 128-130.

REMOVABLE FRONT ACCESS PANEL - Page 131 Factory Installed		8700-07-0CC	\$650
GH400 GRIP HANDLES		Factory Installed. Accepts 2 handles. Price is per handle. If 1 handle is desired, indicate installation location.	
AUTOMATIC OZONE SYSTEM - Page 128	(W) (M)	OZONE-100	\$700
	(a)	OZONE-200	\$700
STAINLESS STEEL HEATER - Page 128	(W)	8706-11-106	\$455
OVERFLOW DRAIN ASSEMBLY - Page 129 (Group BE)	WT	8705-15-001	\$275
	BQ	8705-15-040	\$275
	Polished Chrome	8705-15-091	\$160
	Polished Nickel	8705-15-092	\$275
	Brushed Nickel	8705-15-095	\$275
	Oil Rubbed Bronze	8705-15-098	\$275
MICROSILK SHOWER WAND - Page 129	Polished Chrome	8705-55-091	\$505
TILE FLANGE KIT - Page 129			N/A



(M) MicroSilk® Unit Location

(P) Pump Location

(B) Blower Location

(C) Control Location