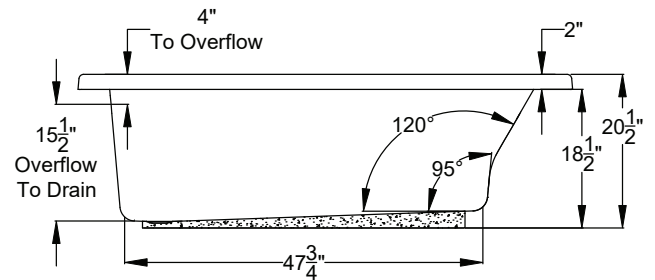
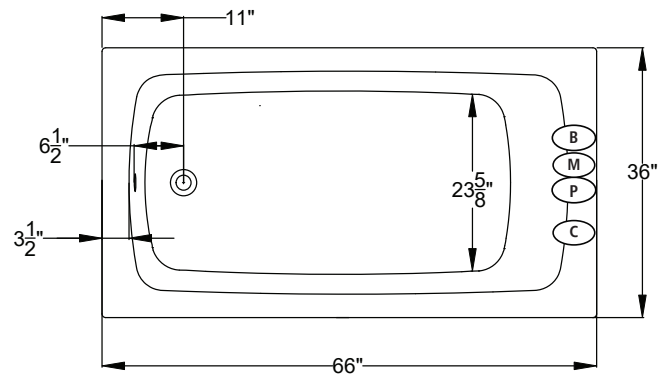


UNDERMOUNTABLE: No

FAUCETRY DECK: No

TEXTURED FLOOR: No

<div> <div>(S)</div> <div>SOAKING</div> <div>Includes Level-Form™ Base</div> </div>		<div> <div>\$3,025</div> <div>(SL) = (3187.40.00.CC)</div> <div>(SR) = (3187.50.00.CC)</div> </div>	<div> <div>All hydrotherapy equipment is rated for 120V, 20A (US)</div> <div>Consult Spec Sheet on website for Boxed Weight & Cube.</div> <div>.CC = Color Code / See page 155 for color options.</div> </div>	<div> <div>Operating Cap: 48 U.S. Gal.</div> </div>	<div> <div>End-Access Required.</div> <div>Order Removable Access Panel for Front Access.</div> </div>
<div> <div>(W)</div> <div>WHIRLPOOL</div> </div>		<div> <div>SKIRT LEFT</div> <div>SKIRT RIGHT</div> </div>			
<ul style="list-style-type: none"> 1 hp, 120V pump - Air on/off control Includes 5 adjustable jets 		<div> <div>\$4,320</div> <div>(3187.40.17.CC)</div> <div>(3187.50.17.CC)</div> </div>			
<div> <div>(a)</div> <div>AIRMASSEUR[®]</div> </div> <ul style="list-style-type: none"> ¾ hp, 120V blower - Air on/off control with 20-minute timer & purge 38 strategically located air jets 20-minute timer with purge cycle 		<div> <div>\$4,850</div> <div>(3187.40.27.CC)</div> <div>(3187.50.27.CC)</div> </div>			
<div> <div>(m)</div> <div>MICROSILK[®]</div> </div> <ul style="list-style-type: none"> 120V MicroSilk[®] System - Air on/off control with a 20-minute timer Includes 1 MicroSilk[®] delivery port 		<div> <div>\$4,925</div> <div>(3187.40.67.CC)</div> <div>(3187.50.67.CC)</div> </div>			



Bath Options

For handle information, see page 127.
For additional options and details, see page 128-130.

REMOVABLE FRONT ACCESS PANEL - Page 131 Factory Installed		8700-07-0CC	\$650
GH400 GRIP HANDLES		Factory Installed. Accepts 2 handles. Price is per handle. If 1 handle is desired, indicate installation location.	
AUTOMATIC OZONE SYSTEM - Page 128	(W)	OZONE-100	\$700
	(a)	OZONE-200	\$700
STAINLESS STEEL HEATER - Page 128	(W)	8706-11-106	\$455
OVERFLOW DRAIN ASSEMBLY - Page 129 (Group BE)	WT	8705-15-001	\$275
	BQ	8705-15-040	\$275
	Polished Chrome	8705-15-091	\$160
	Polished Nickel	8705-15-092	\$275
	Brushed Nickel	8705-15-095	\$275
	Oil Rubbed Bronze	8705-15-098	\$275
MICROSILK SHOWER WAND - Page 129	Polished Chrome	8705-55-091	\$505
TILE FLANGE KIT - Page 129			N/A

(M) MicroSilk[®] Unit Location **(P)** Pump Location
(B) Blower Location **(C)** Control Location