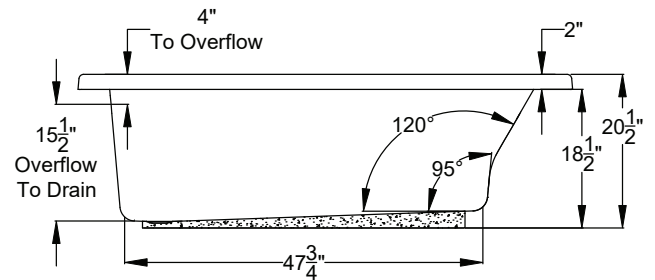
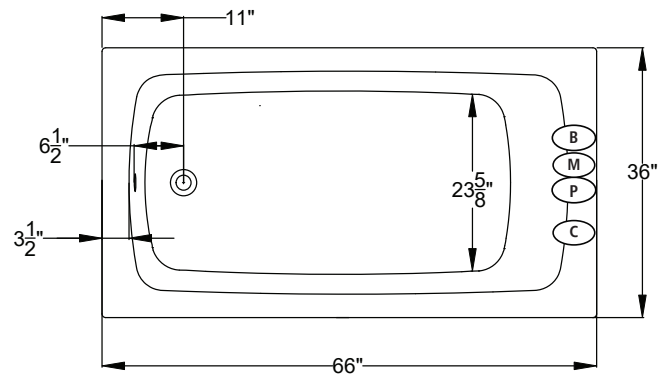


UNDERMOUNTABLE: No

FAUCETRY DECK: No

TEXTURED FLOOR: No

<div><div><div>S</div></div><div>SOAKING</div><div>Includes Level-Form™ Base</div></div> <div><div>\$3,025</div><div>(SL) = (3187.40.00.CC)</div><div>(SR) = (3187.50.00.CC)</div></div> <div><div>All hydrotherapy equipment is rated for 120V, 20A (US) Consult Spec Sheet on website for Boxed Weight &amp; Cube. .CC = Color Code / See page 155 for color options.</div><div>Operating Cap: 48 U.S. Gal.</div></div> <div><div>End-Access Required. Order Removable Access Panel for Front Access.</div><div><div>SKIRT LEFT</div><div>SKIRT RIGHT</div></div></div>	
<div><div><div>W</div></div><div>WHIRLPOOL</div></div> <div><ul style="list-style-type: none"><li>1 hp, 120V pump - Air on/off control</li><li>Includes 5 adjustable jets</li></ul></div>	<div><div>\$4,320</div><div>(3187.40.17.CC)</div><div>(3187.50.17.CC)</div></div>
<div><div><div>a</div></div><div>AIRMASSEUR®</div></div> <div><ul style="list-style-type: none"><li>¾ hp, 120V blower - Air on/off control with 20-minute timer &amp; purge</li><li>38 strategically located air jets</li><li>20-minute timer with purge cycle</li></ul></div>	<div><div>\$4,850</div><div>(3187.40.27.CC)</div><div>(3187.50.27.CC)</div></div>
<div><div><div>m</div></div><div>MICROSILK®</div></div> <div><ul style="list-style-type: none"><li>120V MicroSilk® System - Air on/off control with a 20-minute timer</li><li>Includes 1 MicroSilk® delivery port</li></ul></div>	<div><div>\$4,925</div><div>(3187.40.67.CC)</div><div>(3187.50.67.CC)</div></div>



## Bath Options

For handle information, see page 127.  
For additional options and details, see page 128-130.

REMOVABLE FRONT ACCESS PANEL - Page 131 Factory Installed		8700-07-0CC	\$650
GH400 GRIP HANDLES		Factory Installed. Accepts 2 handles. Price is per handle. If 1 handle is desired, indicate installation location.	
AUTOMATIC OZONE SYSTEM - Page 128	<b>(W)</b> <b>(M)</b>	OZONE-100	\$700
	<b>(a)</b>	OZONE-200	\$700
STAINLESS STEEL HEATER - Page 128	<b>(W)</b>	8706-11-106	\$455
OVERFLOW DRAIN ASSEMBLY - Page 129 (Group BE)	WT	8705-15-001	\$275
	BQ	8705-15-040	\$275
	Polished Chrome	8705-15-091	\$160
	Polished Nickel	8705-15-092	\$275
	Brushed Nickel	8705-15-095	\$275
	Oil Rubbed Bronze	8705-15-098	\$275
MICROSILK SHOWER WAND - Page 129	Polished Chrome	8705-55-091	\$505
TILE FLANGE KIT - Page 129			N/A

**(M)** MicroSilk® Unit Location  
**(B)** Blower Location

**(P)** Pump Location  
**(C)** Control Location