

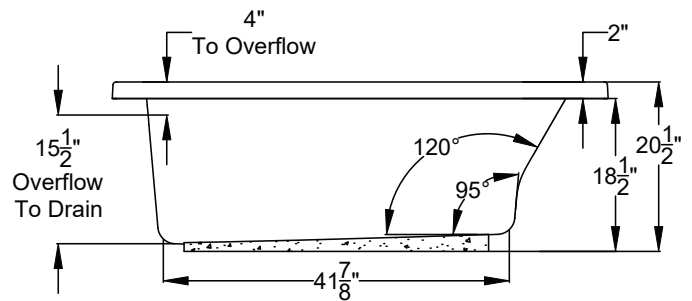
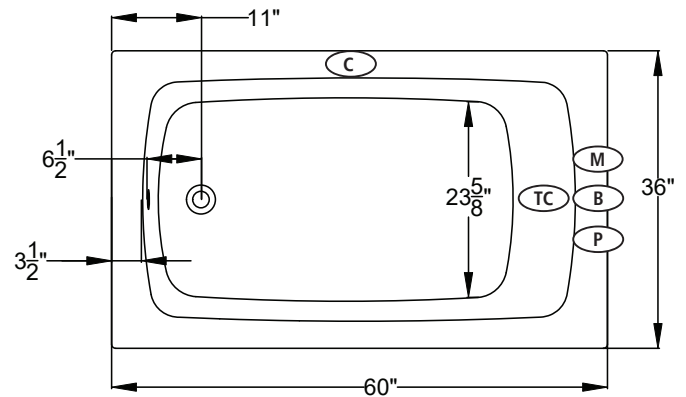
UNDERMOUNTABLE: Yes

FAUCETRY DECK: No

TEXTURED FLOOR: No

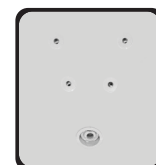
<div> <div>(S)</div> <div>SOAKING</div> <div>Includes Level-Form™ Base</div> </div> <div> <div>\$3,035</div> <div>(2197.00.00.CC)</div> </div> <div> <div>All hydrotherapy equipment is rated for 120V, 20A (US) Consult Spec Sheet on website for Boxed Weight & Cube. .CC = Color Code / See page 155 for color options.</div> <div>Operating Cap: 40 U.S. Gal.</div> </div>		STANDARD	PREMIER
<div>(W)</div> <div>WHIRLPOOL</div> <div>Includes 5 adjustable jets and 2 foot jets with pump unit indicated.</div>		<div>\$6,175</div> <div>(2197.00.11.CC)</div>	<div>\$7,395</div> <div>with Whirlpool heater</div> <div>(2197.00.15.CC)</div>
<div>(a)</div> <div>AIRMASSEUR[®]</div> <div>Includes 42 strategically located air jets, 1hp blower w/ heater.</div>		<div>\$6,275</div> <div>(2197.00.21.CC)</div>	<div>\$7,495</div> <div>(2197.00.25.CC)</div>
<div>(m)</div> <div>MICROSILK[®]</div> <div>Includes 1 MicroSilk delivery port, MicroSilk unit.</div>		<div>\$6,035</div> <div>(2197.00.61.CC)</div>	<div>\$7,255</div> <div>(2197.00.65.CC)</div>
<div>(aw)</div> <div>AIRMASSEUR[®] WHIRLPOOL</div> <div>Includes 5 adjustable jets, 2 foot jets and 42 air jets; 1.5 hp pump; 1hp blower w/ heater. Combines all features provided with both (W) & (a) equipped Standard or Premier baths, respectively.</div>		<div>\$8,115</div> <div>(2197.00.31.CC)</div>	<div>\$9,335</div> <div>with Whirlpool heater</div> <div>(2197.00.35.CC)</div>
<div>(mw)</div> <div>MICROSILK[®] WHIRLPOOL</div> <div>Includes 5 adjustable jets, 2 foot jets and 1 MicroSilk delivery port; MicroSilk unit; 1.5 hp pump. Combines all features provided with both (W) & (m) equipped Standard or Premier baths, respectively.</div>		<div>\$9,170</div> <div>(2197.00.71.CC)</div>	<div>\$10,390</div> <div>with Whirlpool heater</div> <div>(2197.00.75.CC)</div>
<div>(ma)</div> <div>MICROSILK[®] AIRMASSEUR[®]</div> <div>Includes 1 MicroSilk delivery port, 42 strategically located air jets; MicroSilk unit; 1hp blower w/ heater. Combines all features provided with both (a) & (m) equipped Standard or Premier baths, respectively.</div>		<div>\$9,275</div> <div>(2197.00.81.CC)</div>	<div>\$10,495</div> <div>(2197.00.85.CC)</div>

Control pad can be mounted on opposing side of vessel by request.



*Blower must be remote mounted on MicroSilk®-AirMasseur® and Air-Whirlpool baths. See page 130 for remote blower mounting.

- (C) Control Location
- (M) MicroSilk® Unit Location
- (P) Whirlpool Pump Location
- (B) Blower Location
- (TC) Thermo Comfort Heating Pad Location



1 set of
Back-Stack™ jets
on (W) (MW)
(Optional)

NOTE: (mw) equipment may extend beyond the perimeter of the bath. Consult factory for details.

Bath Options

For handle information, see page 127.
For details & additional options, see page 128-130.

GH400 HANDLE - Factory installed. Accepts 2 handles. Price is per handle. If ordering 1 handle, indicate handle installation.		8709-04-0CC	\$315
JETTED NECK PILLOW - Page 128 (W) (aw) (mw)		8707-50-0CC	\$1,145
BACKSTACK™ JETS - Page 128 (W) (mw)		8707-30-001	\$930
BLUETOOTH SOUND IMMERSION SYSTEM - Page 128		8724-01-000	\$835
WATER LEVEL SENSOR - Page 128		8724-02-000	\$1,030
THERMO COMFORT - Page 129 (S) (W) (m) (mw)		8706-04-XXX	\$840
MICROSILK SHOWER WAND - Page 129	Polished Chrome	8705-55-091	\$505
	Optional Finishes	DDK-PC	\$160
DESIGNER OVERFLOW DRAIN KITS - For finish options, see Page 129.		DDK-XX	\$275
TILE FLANGE KIT - Page 129		8707-11-001	\$190
LATERAL SKIRT - Page 131		8700-01-0CC	\$1,165