

UNDERMOUNTABLE: No

FAUCETRY DECK: No

TEXTURED FLOOR: No

(S)

**SOAKING**

Includes Level-Form™ Base

**\$5,555**  
(1201.04.00.CC)

All hydrotherapy equipment is rated for 120V, 20A (US)  
Consult Spec Sheet on website for Boxed Weight & Cube.  
.CC = Color Code / See page 155 for color options.

Operating Cap: 48 U.S. Gal.

**STANDARD**

Includes:  
• 120V Systems  
• Touch Control Pad  
• 20-minute timer

**PREMIER**

All Standard features plus:  
• Ozone  
• Digital Control Pad  
• LED Chromotherapy

(a)

**AIRMASSEUR<sup>®</sup>**

Includes 43 strategically located air jets, 1hp blower w/ heater.

**\$8,795**

(1201.04.21.CC)

**\$10,015**

(1201.04.25.CC)

(m)

**MICROSILK<sup>®</sup>**

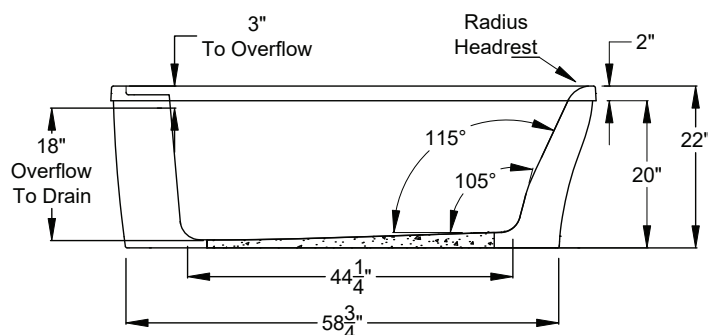
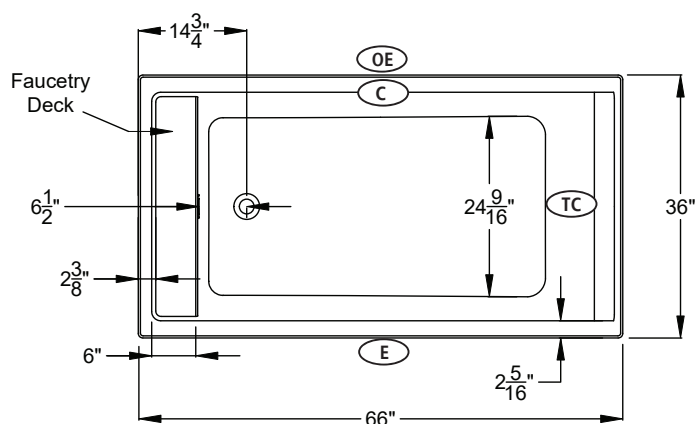
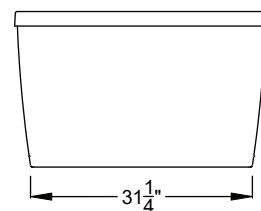
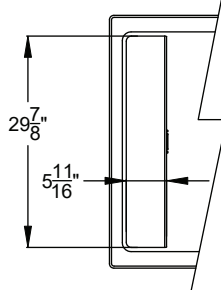
Includes 1 MicroSilk delivery port, MicroSilk unit.

**\$9,255**

(1201.04.61.CC)

**\$10,475**

(1201.04.65.CC)


Faucetry Deck  
Flat Dimensions


## Bath Options

For handle information, see page 127.  
For details & additional options, see page 128-130.

GH400 HANDLE - Factory installed. Accepts 2 handles. Price is per handle. If ordering 1 handle, indicate handle installation.		8709-04-0CC	\$315
ACRYLIC EQUIPMENT CABINET - Page 129 (a)		8701-20-0CC	\$1,025
BLUETOOTH SOUND IMMERSION SYSTEM - Page 128		8724-01-000	\$835
WATER LEVEL SENSOR - Page 128		8724-02-000	\$1,030
THERMO COMFORT - Page 129 (S) (m)		8706-04-XXX	\$840
MICROSILK SHOWER WAND - Page 129	Polished Chrome	8705-55-091	\$505
LINEAR OVERFLOW DRAIN KITS - For finish options, see Page 129.	Polished Chrome	MLD-PC	Included
	Optional Finishes	MLD-XX	ADD \$120

- (C) Control Location
- (E) Equipment Cabinet
- (TC) Thermo Comfort Heating Pad Location
- (OE) Equipment Cabinet (Optional Location)

The Acrylic Equipment Cabinet is required on MicroSilk<sup>®</sup> baths and is available as an option on Airmasseur<sup>®</sup> baths.
