

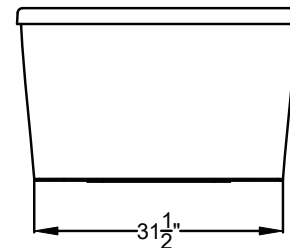
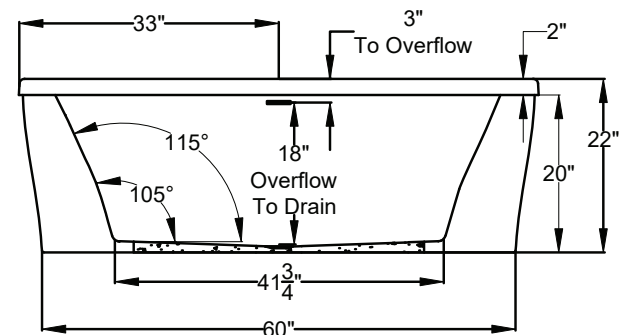
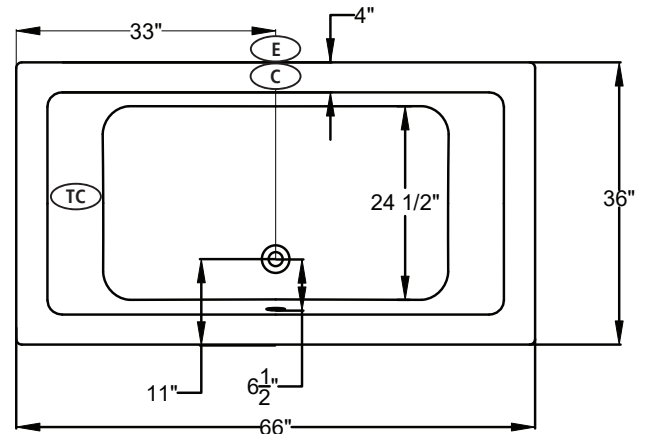
UNDERMOUNTABLE: No

FAUCETRY DECK: No

TEXTURED FLOOR: No

<div><div><div><div><div><div></div><div>(S)</div></div></div><div><div>SOAKING</div><div>Includes Level-Form™ Base</div></div></div></div><div><div><div>\$5,555</div><div>(1183.04.00.CC)</div></div></div><div><div><div>All hydrotherapy equipment is rated for 120V, 20A (US) Consult Spec Sheet on website for Boxed Weight &amp; Cube. .CC = Color Code / See page 155 for color options.</div><div>Operating Cap: 45 U.S. Gal.</div></div></div></div>		STANDARD	PREMIER
		<div>Includes:</div> <div><div><div>• Linear Overflow Drain</div><div>• Touch Control Pad</div><div>• 20-minute timer</div></div></div>	<div>All Standard features plus:</div> <div><div><div>• Ozone</div><div>• Digital Control Pad</div><div>• LED Chromatherapy</div></div></div>
<div><div><div><div><div></div><div>(a)</div></div></div><div><div>AIRMASSEUR®</div></div></div></div>	<div>Includes 44 strategically located air jets, 1hp blower w/ heater.</div>	<div><div><div>\$8,795</div><div>(1183.04.21.CC)</div></div></div> <div><div><div>\$10,015</div><div>(1183.04.25.CC)</div></div></div>	
<div><div><div><div><div></div><div>(m)</div></div></div><div><div>MICROSILK®</div></div></div></div>	<div>Includes 1 MicroSilk delivery port, MicroSilk unit.</div>	<div><div><div>\$9,255</div><div>(1183.04.61.CC)</div></div></div> <div><div><div>\$10,475</div><div>(1183.04.65.CC)</div></div></div>	

Designer  
FREESTANDING



### Bath Options

For handle information, see page 127.  
For details & additional options, see page 128-130.

<b>GH400 HANDLE</b> - Factory installed. Accepts 1 handle across from overflow.	8709-04-0CC	\$315
<b>ACRYLIC EQUIPMENT CABINET</b> - Page 129 (a)	8701-20-0CC	\$1,025
<b>BLUETOOTH SOUND IMMERSION SYSTEM</b> - Page 128	8724-01-000	\$835
<b>WATER LEVEL SENSOR</b> - Page 128	8724-02-000	\$1,030
<b>THERMO COMFORT</b> - Page 129 (S) (a) (m)	8706-04-XXX	\$840
<b>MICROSILK SHOWER WAND</b> - Page 129	Polished Chrome 8705-55-091	\$505
<b>LINEAR OVERFLOW DRAIN KITS</b> - For finish options, see Page 129.	Polished Chrome MLD-PC	Included
	Optional Finishes MLD-XX	ADD \$120

- (C) Control Location
- (E) Equipment Cabinet
- (TC) Thermo Comfort Heating Pad Location

The Acrylic Equipment Cabinet is required on MicroSilk<sup>®</sup> baths and is available as an option on Airmasseur<sup>®</sup> baths.

