

UNDERMOUNTABLE: No

FAUCETRY DECK: No

TEXTURED FLOOR: No

(S)

### SOAKING

Includes Level-Form™ Base

**\$5,555**  
(1183.06.00.CC)

All hydrotherapy equipment is rated for 120V, 20A (US)  
Consult Spec Sheet on website for Boxed Weight & Cube.  
.CC = Color Code / See page 155 for color options.

Operating Cap: 45 U.S. Gal.

### STANDARD

Includes:  
• Linear Overflow Drain  
• Touch Control Pad  
• 20-minute timer

### PREMIER

All Standard features plus:  
• Ozone  
• Digital Control Pad  
• LED Chromatherapy

(a)

AIRMASSEUR<sup>®</sup>

Includes 44 strategically located air jets, 1hp blower w/ heater.

**\$8,795**

(1183.06.21.CC)

**\$10,015**

(1183.06.25.CC)

(m)

MICROSILK<sup>®</sup>

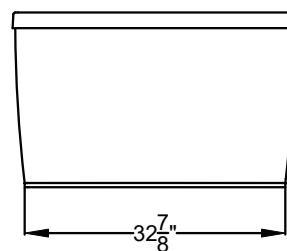
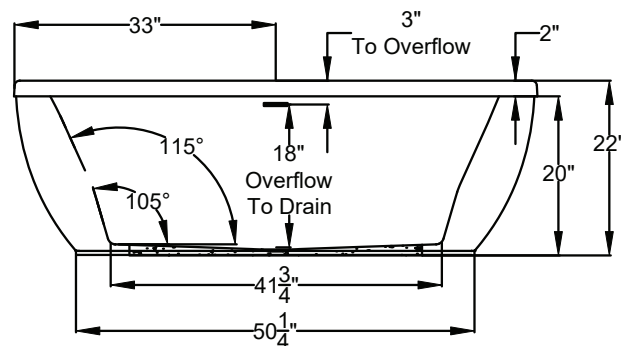
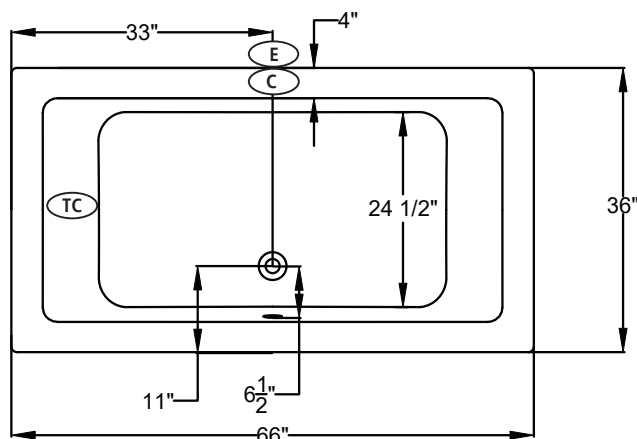
Includes 1 MicroSilk delivery port, MicroSilk unit.

**\$9,255**

(1183.06.61.CC)

**\$10,475**

(1183.06.65.CC)



### Bath Options

For handle information, see page 127.  
For details & additional options, see page 128-130.

GH400 HANDLE - Factory installed. Accepts 1 handle across from overflow.		8709-04-0CC	\$315
ACRYLIC EQUIPMENT CABINET - Page 129 (a)		8701-21-0CC	\$1,025
BLUETOOTH SOUND IMMERSION SYSTEM - Page 128		8724-01-000	\$835
WATER LEVEL SENSOR - Page 128		8724-02-000	\$1,030
THERMO COMFORT - Page 129 (S) (a) (m)		8706-04-XXX	\$840
MICROSILK SHOWER WAND - Page 129	Polished Chrome	8705-55-091	\$505
LINEAR OVERFLOW DRAIN KITS - For finish options, see Page 129.	Polished Chrome	MLD-PC	Included
	Optional Finishes	MLD-XX	ADD \$120

(C)

Control Location

(E)

Equipment Cabinet

(TC)

Thermo Comfort Heating Pad Location

The Acrylic Equipment Cabinet is required on MicroSilk<sup>®</sup> baths and is available as an option on Airmasseur<sup>®</sup> baths.

